



# Year 2 position and direction

## Prior Knowledge

- Use of beebots
- Links to geography
- EGPS links (prepositions)
- Real life application – Forest School
- Describe position, directions and movements, including whole, half, quarter and three-quarter turns (Y1)

## position and direction

Working  
Towards

Within

Expected

Above



Order and arrange combinations of mathematical objects in patterns and sequences

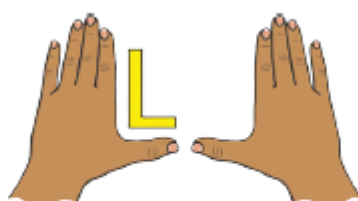
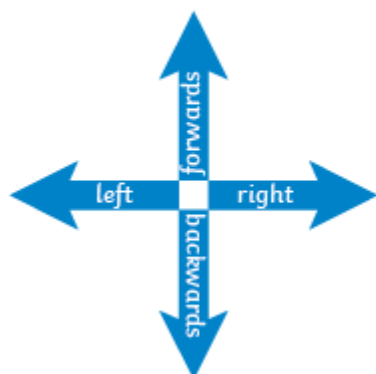
Use mathematical vocabulary to describe position, direction and movement including movement in a straight line and distinguishing between rotation as a turn and in terms of right angles for quarter, half and three-quarter turns (clockwise and anti-clockwise)

Highlights: \_\_\_\_\_



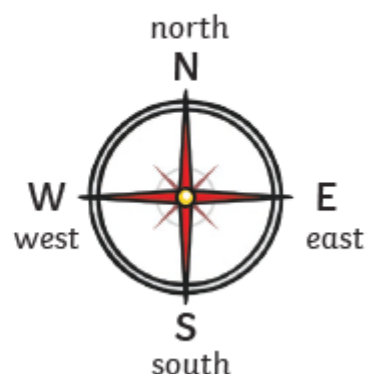
## Glossary

### Describing Straight-Line Movement



### Left and Right

The hand that makes an L shape is the **left hand**.



### Describing Turns



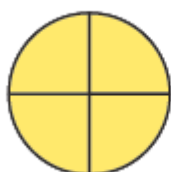
quarter turn



half turn



three-quarter turn



full turn

### clockwise



### anticlockwise



If the turn is in the same direction as the hands of a clock, it is **clockwise**.

If the turn is in the opposite direction to the hands of a clock, it is **anticlockwise**.



## Resources

beebots, grids, outside learning, chrome books and lego



## Future Learning

### Year 6

- Describe positions on the full coordinate grid (all 4 quadrants)
- Draw and translate simple shapes on the coordinate plane, and reflect them in the axes