

# Grouping Animals Extension

Empty rounded rectangular box for student input.



lays eggs

breathes air

lives in water

### whale

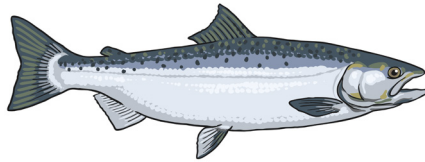


Lives in water

Gives birth

Breathes air

### salmon

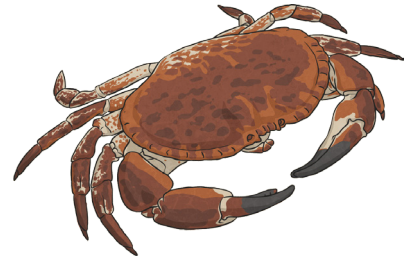


Lives in water

Lays eggs

Breathes through gills

### brown crab

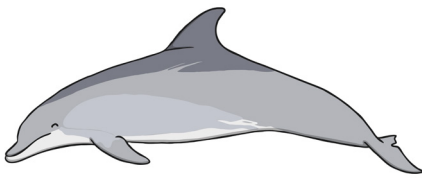


Lives in water

Lays eggs

Breathes through gills

### dolphin

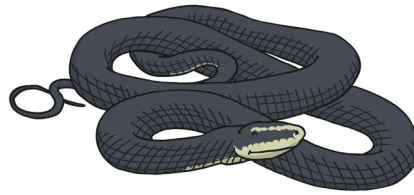


Lives in water

Gives birth

Breathes air

### snake

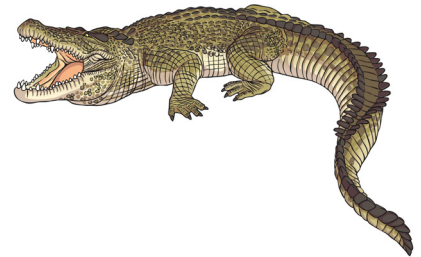


Lives on land

Lays eggs

Breathes air

### crocodile

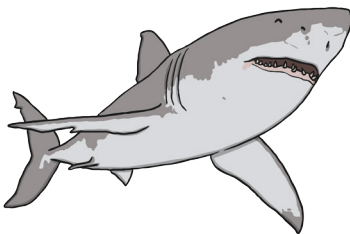


Lives in water

Lays eggs

Breathes air

### shark

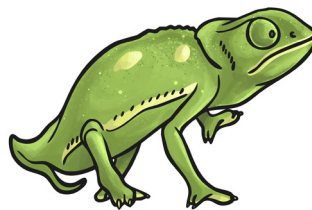


Lives in water

Gives birth

Breathes through gills

### chameleon

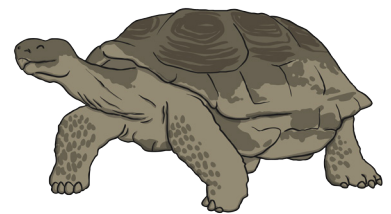


Lives on land

Lays eggs

Breathes air

### giant tortoise

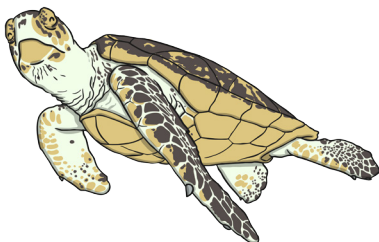


Lives on land

Lays eggs

Breathes air

### sea turtle

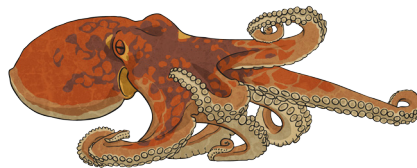


Lives in water

Lays eggs

Breathes air

### octopus

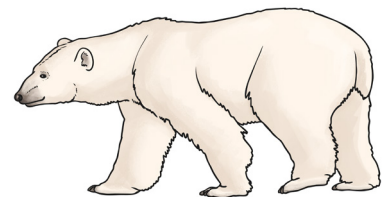


Lives in water

Lays eggs

Breathes through gills

### polar bear



Lives on land

Gives birth

Breathes air

# Grouping Animals Extension Answer Sheet

