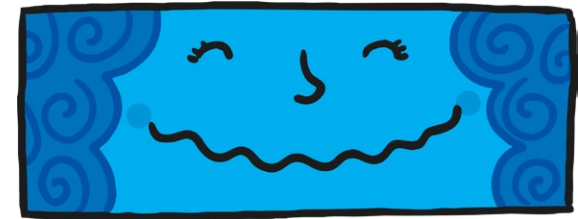


# Dashes

Dashes create a break in the sentence.  
They are usually used in informal writing.

**Shows a sharp break between two main clauses.**

The film was very informative – I learned a great deal.



**Marks out extra information embedded in the sentence.**

Playing in Grandma's garden – which is huge – is always good fun.



One thing's for sure – he  
doesn't want to go!

A toad's skin is dry and  
bumpy – not like the frog's  
smooth, wet skin!

