

Paediatric Occupational Therapy

Support for All – Universal

Areas we will cover today

1. What do Occupational Therapists do?
2. The OT process and our approach.
3. How the service works
4. Support for All – Universal Offer

What is Occupational Therapy?

What is Occupational Therapy?

“Occupational therapy aims to improve your ability to do everyday tasks if you're having difficulties.”

NHS, 2020



“Occupational therapists help babies, infants, children and young people grow, learn, have fun, socialise and play – so they can develop, thrive and reach their full potential.”

RCOT, 2023

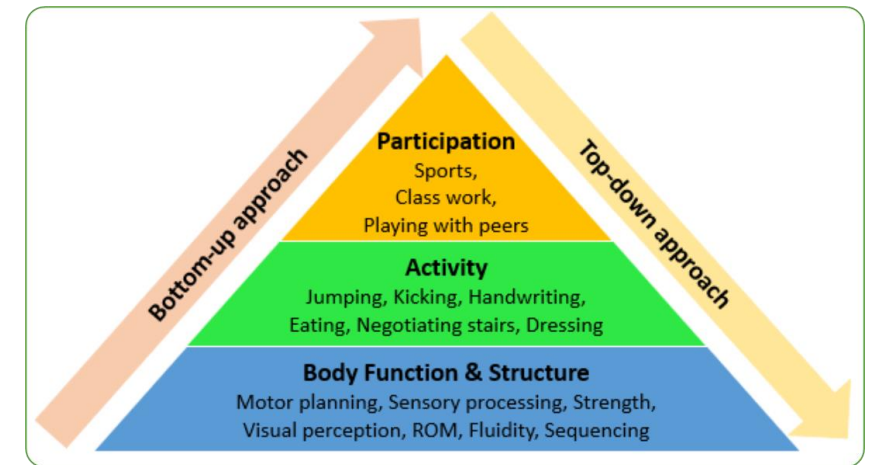
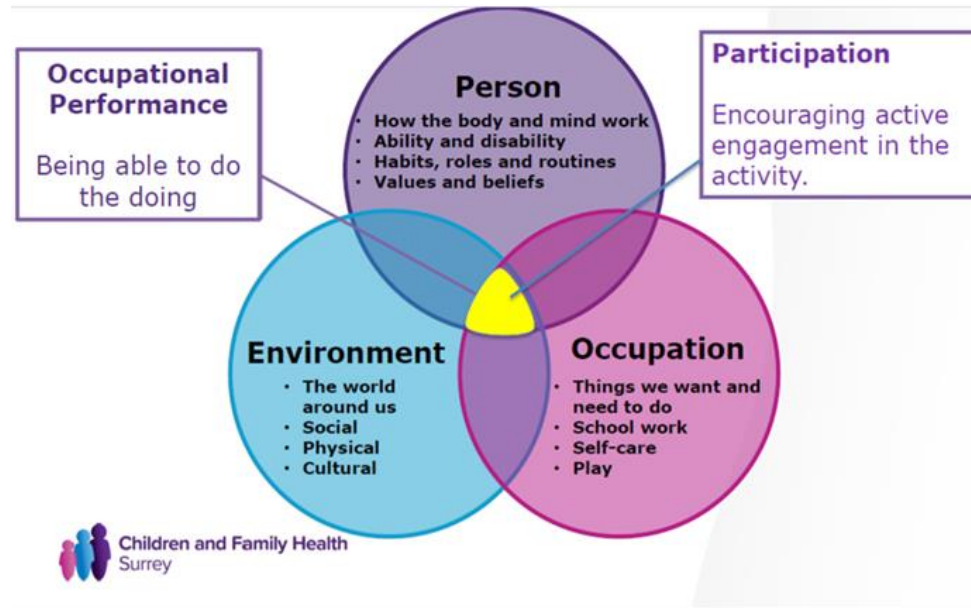
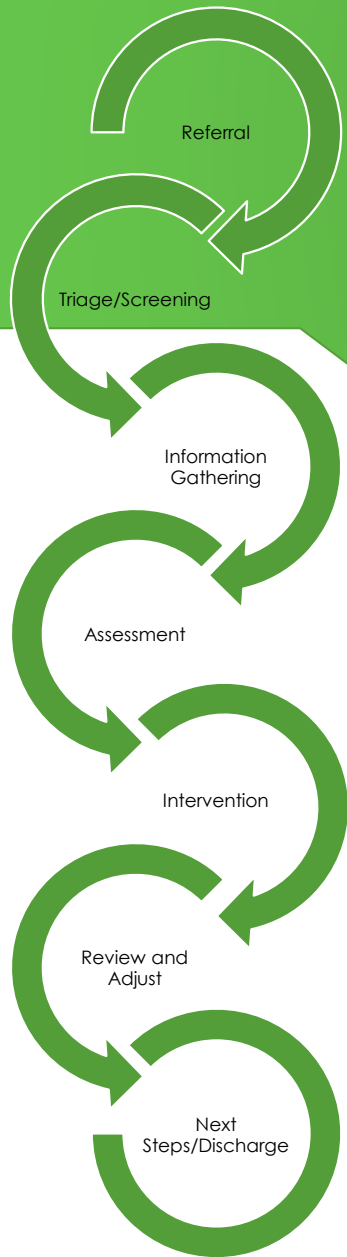
Child Occupations

- Classroom participation – attention & concentration, listening, following instructions, transitions, managing the sensory/physical environment.
- Productivity – handwriting, recording work (typing), technology, tool use, organising materials, resources, play, peer engagement.
- Leisure - clubs, playing sports & P.E
- Self-care – dressing, fastenings, toileting, self-feeding, washing, teeth brushing,
- Equipment provision – supportive and specialist seating for school, under 5 years specialist seating/ home equipment
- School access – accessing the playground, lunch hall and classroom.

What don't we do?

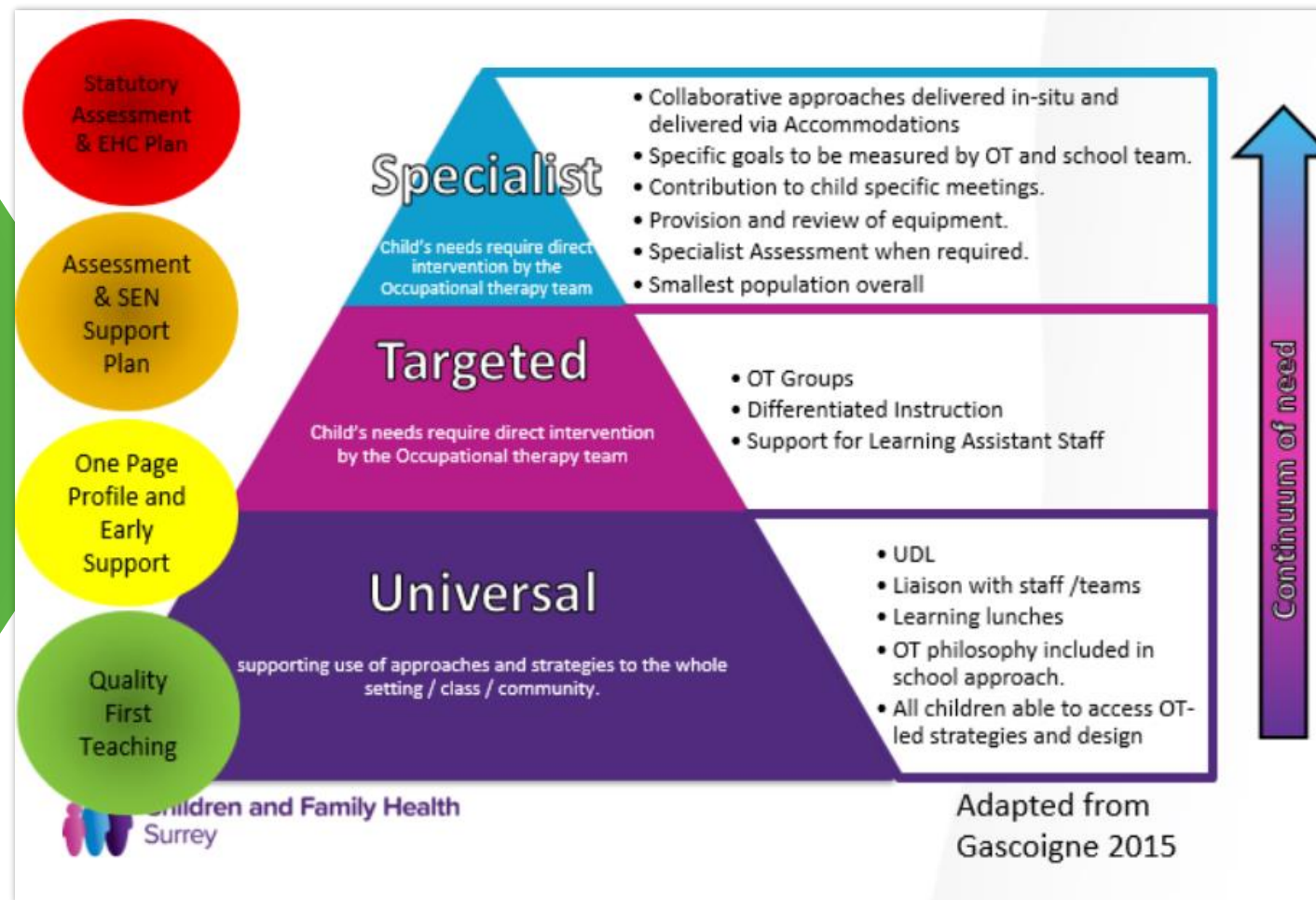
- Exercise based therapy
- Diagnosis
- Home adaptation/home equipment over the age of 3
 - *Surrey CC Occupational Therapist*
- Wheelchair Services
 - *Surrey Wheelchair Services*
- Mental Health Therapists
 - *Mindworks/CAMHS*

OT Process



Our Service

Universal Support



School Based OT Link Support

The link OT role involves supporting schools and other professionals in a universal capacity, to provide strategies and advice early on, with the hope this will lead to less children in future requiring targeted or specialist support.

An OT can meet the school SENCO/ Inclusion lead for regular meetings and typically, the OT who has a caseload of children accommodated to them within the school will be the link OT.

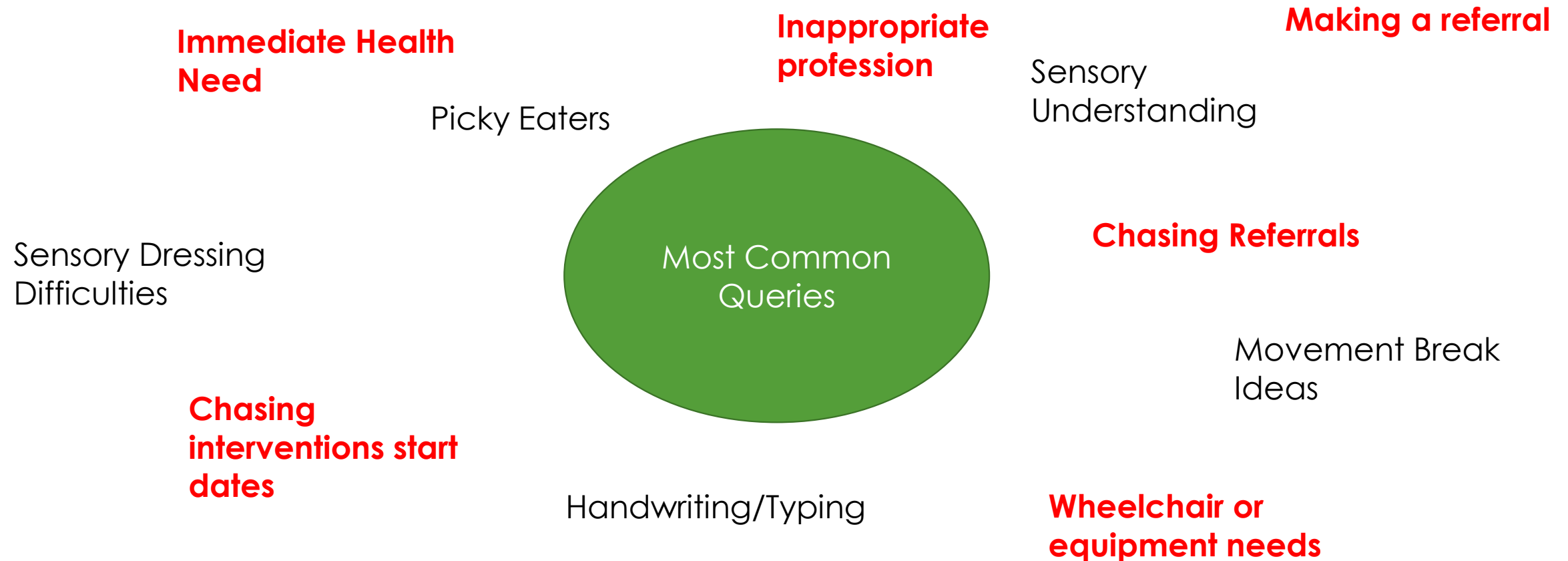
These meetings are used to discuss allocated/open children but also other areas that are covered by the link role:

- Referrals - Are they appropriate? What can they do first?
- Link visits
- Training needs
- Group set ups

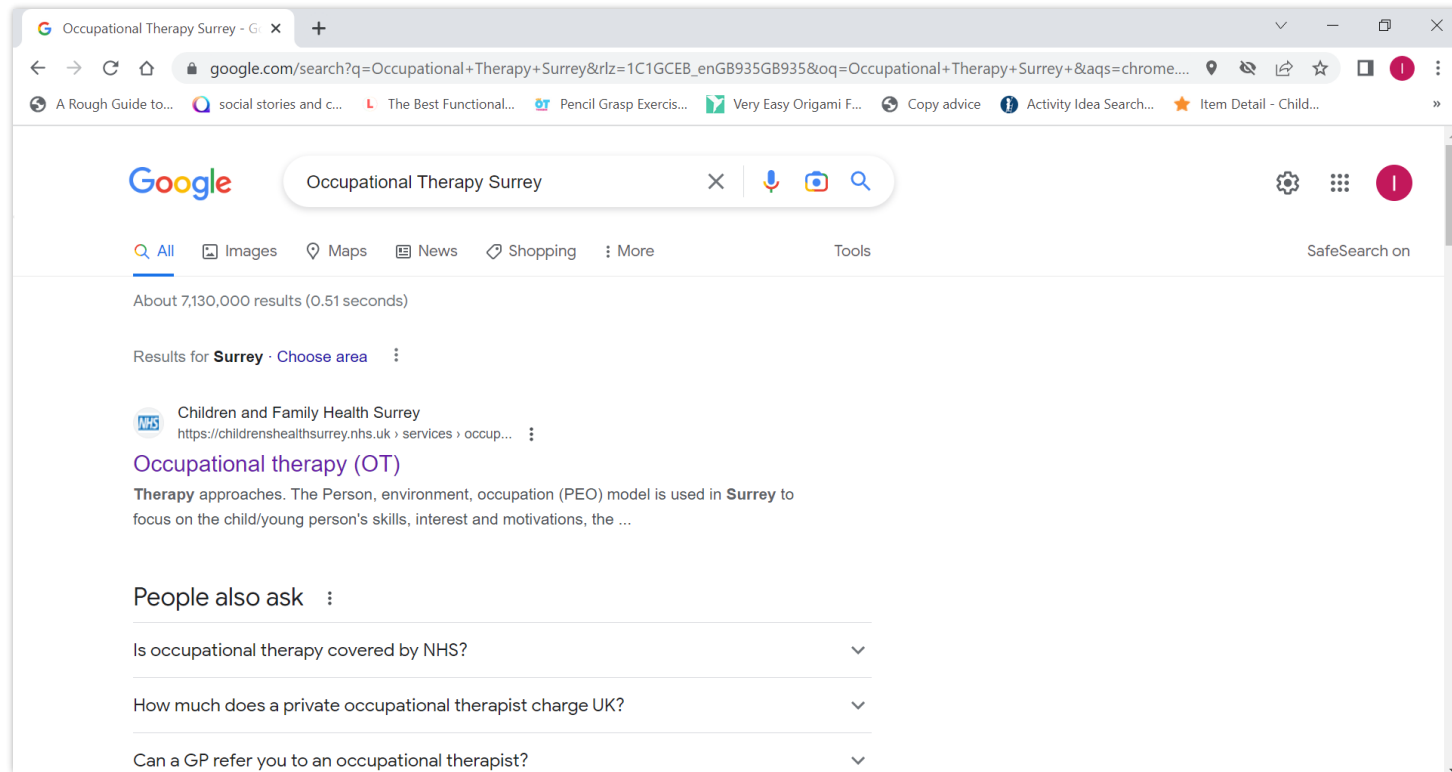
OT Helpline

- To provide support, advice and signposting of resources to settings, carers other professionals to support a child's everyday living skills.
- Helpline is open to receive calls:
- Tuesday & Thursdays 1pm – 4pm
- Telephone - 01932558570
- A new phone system is enabling multiple calls and increasing capacity
- [Occupational therapy \(OT\) :: Children and Family Health Surrey \(childrenshealthsurrey.nhs.uk\)](http://childrenshealthsurrey.nhs.uk)

OT Helpline



Website Resources





Any questions ?

References

- Del Giudice Titomanlio, L. Brogna, A. Mansi, G. Paludetto, R. Di Mita, O. Toscao, E. And Andria, G. (2006) Early Intervention For Children With Downs Syndrome In Southern Italy: The Role Of Parent Implemented Developmental Training. *Infants And Young Children* 19 (1) 50-58
- Keen, D. Couzens, D. And Rodger, S. (2010) The Effects Of A Parent-Focussed Intervention For Children With A Recent Diagnosis Of Autism Spectrum Disorder On Parenting Stress And Competence. *Research In Autism Spectrum Disorders*. 4 229-241
- Mcconchie And Diggle (2007) Parent Implemented Early Intervention For Young Children With Autism Spectrum Disorder: A Systematic Review. *Journal Of Evaluation In Clinical Practice*. 13 120-129
- Imms, C. Cowan, R. Ertekin, E. Klein, G. And Galvin, J. (2010) Eight Weeks Of Occupational Therapy Home Programme, Compared To No Programme , Resulted In Improved Achievement Of Child And Family – Selected Goals By Children With Cerebral Palsy. *Australian Occupational Therapy Journal*. 57 (6) 444-5

